

# How do I spin out my service?

Oliver Cappleman

[oliver@mutualventures.co.uk](mailto:oliver@mutualventures.co.uk)



# The toolkit

- ▼ Designed to help you consider objectively whether an alternative delivery model is right for your library service
- ▼ Funded by DCMS and supported through the Libraries Taskforce
- ▼ Combines technical expertise with lessons learnt from the 4 libraries mutuals
- ▼ [www.gov.uk/government/publications/libraries-alternative-delivery-models-toolkit](http://www.gov.uk/government/publications/libraries-alternative-delivery-models-toolkit)



Department  
for Culture  
Media & Sport

[See more information about this Guidance](#)

Guidance

## Introduction to alternative delivery models toolkit

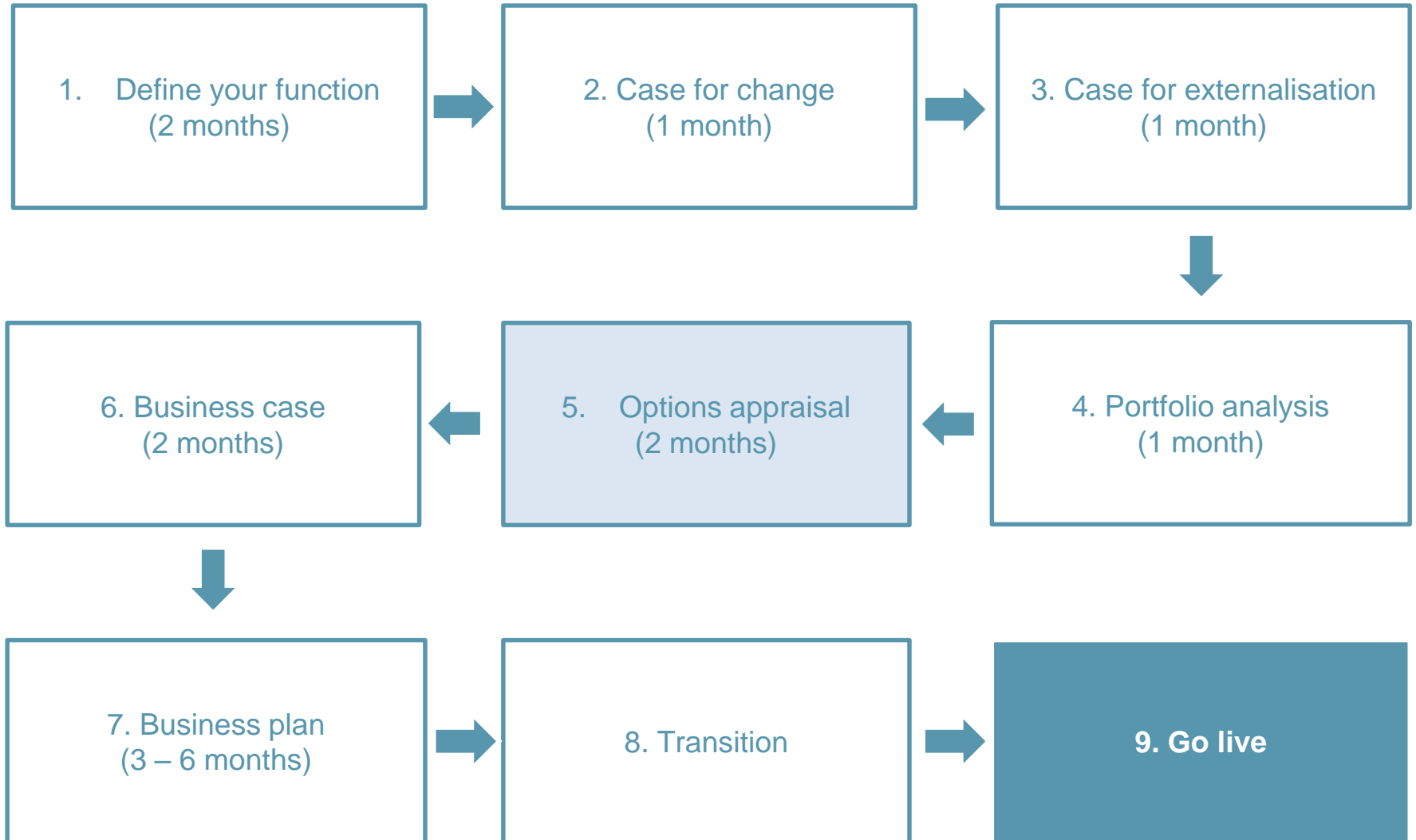
Published

### Contents

1. Introduction to the toolkit
2. Why develop an alternative delivery model toolkit for libraries?
3. How to use the toolkit
4. The underlying principles of the toolkit
5. What other support is available?



# The spin out process





# Options appraisal process





# Assessment criteria

## 1 Desirability

### How well does the model:

- ▼ promote the objectives and priorities of the library service and local authority
- ▼ help meet key outcomes?
- ▼ allow for the required level of ownership/control?

## 2 Viability

### The extent to which the model:

- ▼ demonstrates financial sustainability?
- ▼ allows savings to be realised?
- ▼ Achieves any required additional income?

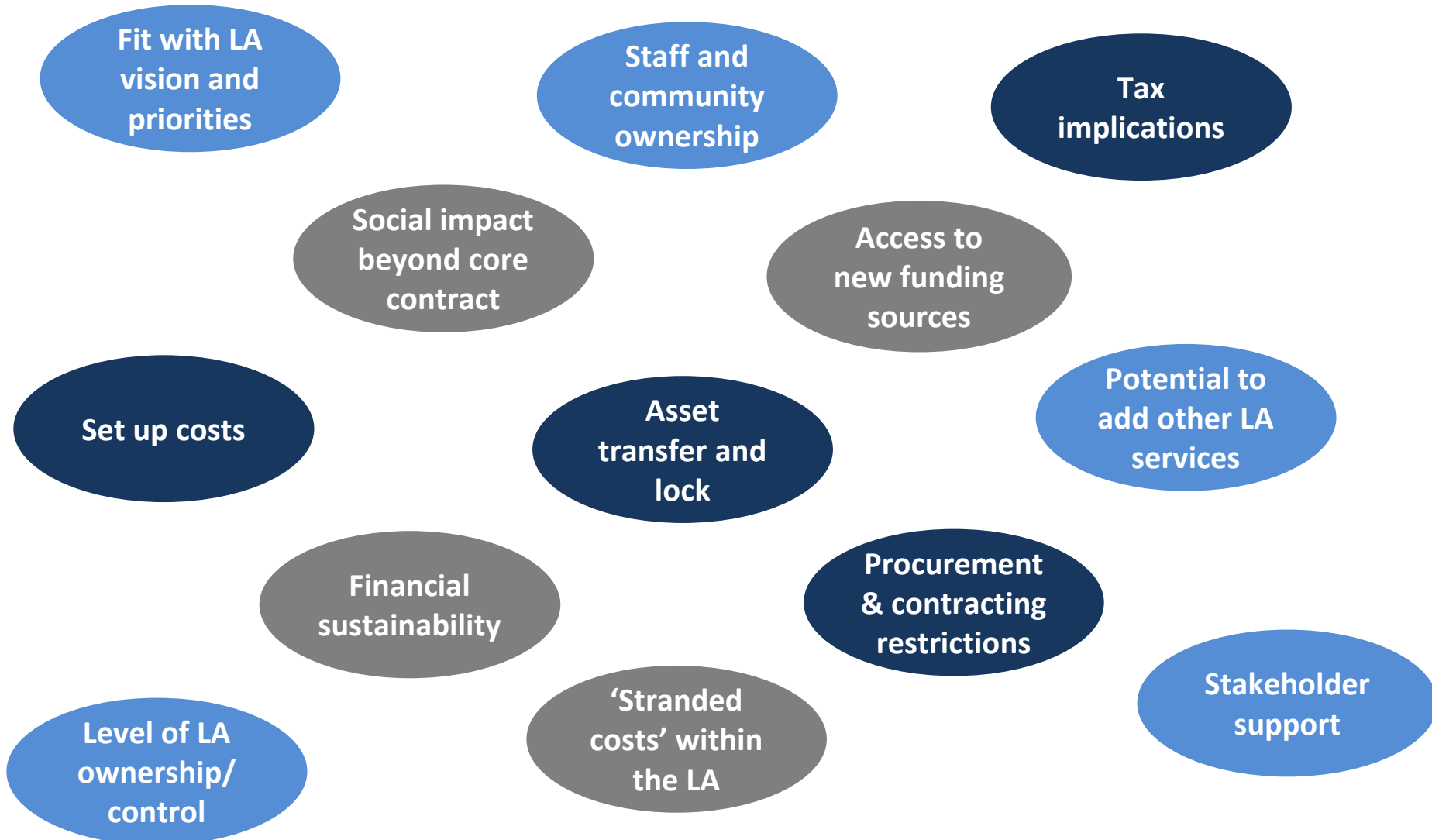
## 3 Feasibility

### The extent to which each option:

- ▼ can be implemented within required tolerances (cost/time etc.)?
- ▼ allows the council to discharge relevant statutory functions?
- ▼ deals with the technical challenges (pensions, TUPE, assets etc.)



# Assessment criteria





# Critical success factors

- ▼ Choosing the right model – function before form
- ▼ Robust libraries strategy and business plan
- ▼ Support from the commissioning authority
- ▼ Leadership and commitment from the staff group
- ▼ Shared vision and objectives (leadership, staff and commissioner)
- ▼ Early decision on commissioning route
- ▼ Resolving key technical issues
- ▼ Right resources and support at the right time